



ATTENTION BROKERS
FOR LEASE

Oliver Industrial Park

2612 - 2628 Oliver Ave.
Wichita, KS 67210



**WAREHOUSE -
MANUFACTURING -
OFFICE**

OliverIndustrialPark.com



Oliver Industrial Park

2612 - 2628 Oliver Ave. Wichita, KS
67210

PROPERTY OVERVIEW

- The Oliver Industrial Park in Wichita, KS located at 2616 S Oliver Ave is comprised of 37,980 square feet of leasable space divided into 38 warehouse units. The units range in size from 400 square feet to 3,000 square feet of office and warehouse space.
- The property features brick construction with insulated, pitched roofs, high interior clearance, and wide spans. Several units include office build-outs.

Situated near US-35, this industrial park is ideally positioned for businesses seeking office, retail, warehouse, storage, or light manufacturing space.



Warehouse Space for Lease - 450 RSF - Wichita, KS

450
SQUARE FEET

\$12.00 /yr
RENT / SF

\$450.00
RENT

(316) 202-5145
www.OliverIndustrialPark.com



PROPERTY ADDRESS

2616 S Oliver Ave
Wichita, KS 67210

LEASE TYPE: **NNN** AVAILABLE: **Now**

DESCRIPTION

Available from Grid Property Management, LLC.

View full marketing details on the website:
www.OliverIndustrialPark.com

Click here to apply: <https://tinyurl.com/GridCommercialApp>

Situated near US-35, this industrial park is ideally positioned for businesses seeking office, retail, warehouse, storage, or light manufacturing space.

The Oliver Industrial Park is comprised of 37,980 square feet of leasable space divided into 38 warehouse units. The units range in size from 400 square feet to 3,000 square feet of office and warehouse space.

The property features brick construction with insulated, pitched roofs, high interior clearance, and wide spans. Several units include office build-outs.

The property will soon benefit from a campaign of improvements: site-wide exterior security cameras, a controlled access gate, parking lot re-striping, exterior painting, etc.

Suite 201 is a total of 450 RSF.

Suite 201 comes equipped with roll-up doors and sufficient power and water access.

The first-year base rent rate is \$8.75 per year per square foot (\$328.13 per month) plus \$3.25 per year per square foot pro-rata

AMENITIES

- High Ceilings
- Roll up door
- Ample Water
- Ample Lighting
- Outdoor Parking

RENTAL TERMS

Rent	\$450
Security Deposit	\$750
Application Fee	--



View this listing online:



Warehouse Space for Lease - 450 RSF - Wichita, KS

450
SQUARE FEET

\$12.00 /yr
RENT / SF

\$450.00
RENT

(503) 321-5140
www.OliverIndustrialPark.com



PROPERTY ADDRESS

2616 S Oliver Ave
Wichita, KS 67210

LEASE TYPE: **NNN** AVAILABLE: **Now**

DESCRIPTION

Available from Grid Property Management, LLC.

View full marketing details on the website:
www.OliverIndustrialPark.com

Click here to apply: <https://tinyurl.com/GridCommercialApp>

Situated near US-35, this industrial park is ideally positioned for businesses seeking office, retail, warehouse, storage, or light manufacturing space.

The Oliver Industrial Park is comprised of 37,980 square feet of leasable space divided into 38 warehouse units. The units range in size from 400 square feet to 3,000 square feet of office and warehouse space.

The property features brick construction with insulated, pitched roofs, high interior clearance, and wide spans. Several units include office build-outs.

The property will soon benefit from a campaign of improvements: site-wide exterior security cameras, a controlled access gate, parking lot re-striping, exterior painting, etc.

Suite 206 is a total of 450 RSF.

Suite 206 comes equipped with roll-up doors and sufficient power and water access.

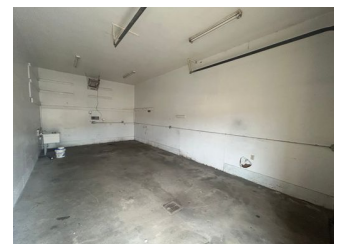
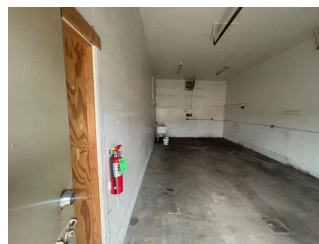
The first-year base rent rate is \$8.75 per year per square foot (\$328.13 per month) plus \$3.25 per year per square foot pro-rata

AMENITIES

- High Ceilings
- Roll up door
- Ample Water
- Ample Lighting
- Outdoor Parking

RENTAL TERMS

Rent	\$450
Security Deposit	\$750
Application Fee	\$0



View this listing online:



Warehouse Space for Lease - 450 RSF - Wichita, KS

450
SQUARE FEET

\$12.00 /yr
RENT / SF

\$450
RENT

(316) 202-5145
www.OliverIndustrialPark.com



PROPERTY ADDRESS

2616 S Oliver Ave - Suite 213
Wichita, KS 67210

LEASE TYPE: **NNN** AVAILABLE: **2/15/25**

DESCRIPTION

Available from Grid Property Management, LLC.

View full marketing details on the website:
www.OliverIndustrialPark.com

Click here to apply: <https://tinyurl.com/GridCommercialApp>

Situated near US-35, this industrial park is ideally positioned for businesses seeking office, retail, warehouse, storage, or light manufacturing space.

The Oliver Industrial Park is comprised of 37,980 square feet of leasable space divided into 38 warehouse units. The units range in size from 400 square feet to 3,000 square feet of office and warehouse space.

The property features brick construction with insulated, pitched roofs, high interior clearance, and wide spans. Several units include office build-outs.

The property will soon benefit from a campaign of improvements: site-wide exterior security cameras, a controlled access gate, parking lot re-striping, exterior painting, etc.

Suite 213 is a total of 450 RSF.

Suite 213 comes equipped with roll-up doors and sufficient power and water access.

AMENITIES

- High Ceilings
- Roll up door
- Ample Water
- Ample Lighting
- Outdoor Parking

RENTAL TERMS

Rent	\$450
Security Deposit	\$750
Application Fee	\$0



View this listing online:



Warehouse Space for Lease - 1,600 RSF - Wichita, KS

1,600
SQUARE FEET

\$12.00 /yr
RENT / SF

\$1,600
RENT

(316) 202-5145
www.OliverIndustrialPark.com



PROPERTY ADDRESS

2616 S Oliver Ave - Suite 502/503 (Formerly 2624-102)
Wichita, KS 67210

COMMERCIAL TYPE: **Industrial**

LEASE TYPE: **NNN** AVAILABLE: **2/15/25**

DESCRIPTION

Available from Grid Property Management, LLC.

View full marketing details on the website:
www.OliverIndustrialPark.com

Click here to apply: <https://tinyurl.com/GridCommercialApp>

Situated near US-35, this industrial park is ideally positioned for businesses seeking office, retail, warehouse, storage, or light manufacturing space.

The Oliver Industrial Park is comprised of 37,980 square feet of leasable space divided into 38 warehouse units. The units range in size from 400 square feet to 3,000 square feet of office and warehouse space.

The property features brick construction with insulated, pitched roofs, high interior clearance, and wide spans. Several units include office build-outs.

The property will soon benefit from a campaign of improvements: site-wide exterior security cameras, a controlled access gate, parking lot re-stripping, exterior painting, etc.

Suite 502/503 is a total of 1,600 RSF.

Suite 502/503 comes equipped with roll-up doors and sufficient power and water access.



AMENITIES

- Assigned Outdoor Parking
- 2 Roll Up Doors
- Heat
- Roll up door

RENTAL TERMS

Rent	\$1,600
Security Deposit	\$1,000
Application Fee	\$0

View this listing online:



Oliver Industrial Park

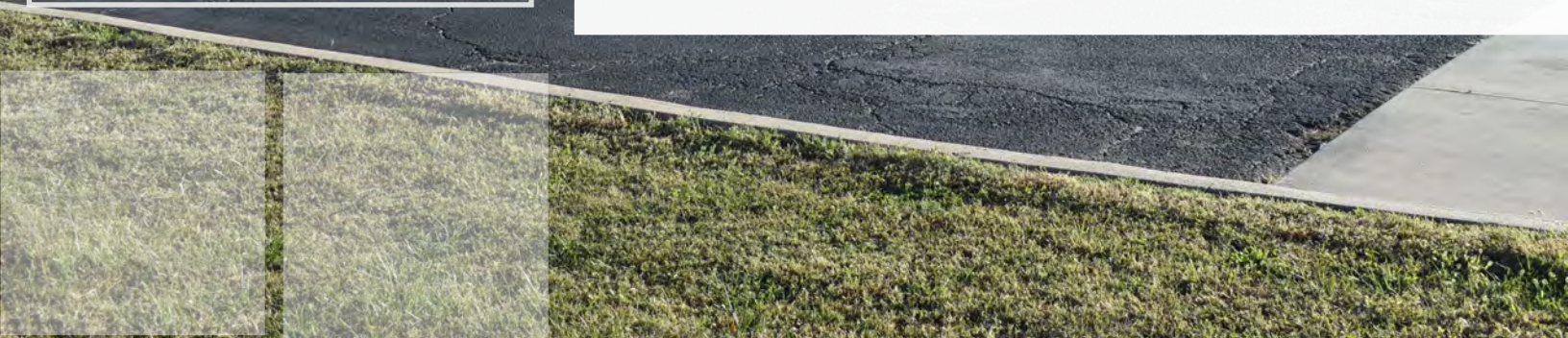
2612 - 2628 Oliver Ave.
Wichita, KS 67210

WAREHOUSE SPACE IDEAL FOR LIGHT
MANUFACTURING AND PRODUCTION.

**Is your client the perfect fit?
Let's talk today.**

LeasingTeam@GridPropertyManagement.com
316-202-5145

Individual suite information is available at
OliverIndustrialPark.com



Grid Property Management is a property management firm that specializes in the management of commercial and industrial properties.